

## SUBMITTAL DATA: MEL60-1

## 60,000 Btu/h Package System

Job Name: \_\_\_\_\_ Location: \_\_\_\_\_ Date: \_\_\_\_\_

Purchaser: \_\_\_\_\_ Engineer: \_\_\_\_\_

Submitted To: \_\_\_\_\_ FOR:  REVIEW  APPROVAL

Unit Tags: \_\_\_\_\_ Quantity: \_\_\_\_\_

### GENERAL FEATURES:

- High Efficiency
- Easy connection of electrical and control wires reduces installation costs
- Compact foot print design, same for units 2 Ton - 5 Ton
- Low Maintenance blower assembly can be easily cleaned by slide-out blower assembly
- Top discharge condenser fan for quieter operation
- Horizontal or Downflow discharge
- No panel cutting is required and no accessory panel is necessary
- Convertible airflow design allows maximum field flexibility and minimum inventory
- Durable Finish - Salt spray tested for 1000 hours
- Rifled copper tube and enhanced aluminum fin construction
- ARI Certified & ETL Listed
- Certified in accordance with ARI 210/240 standards, ETL listed for electrical safety

### APPROVALS:



### GENERAL SPECIFICATIONS:

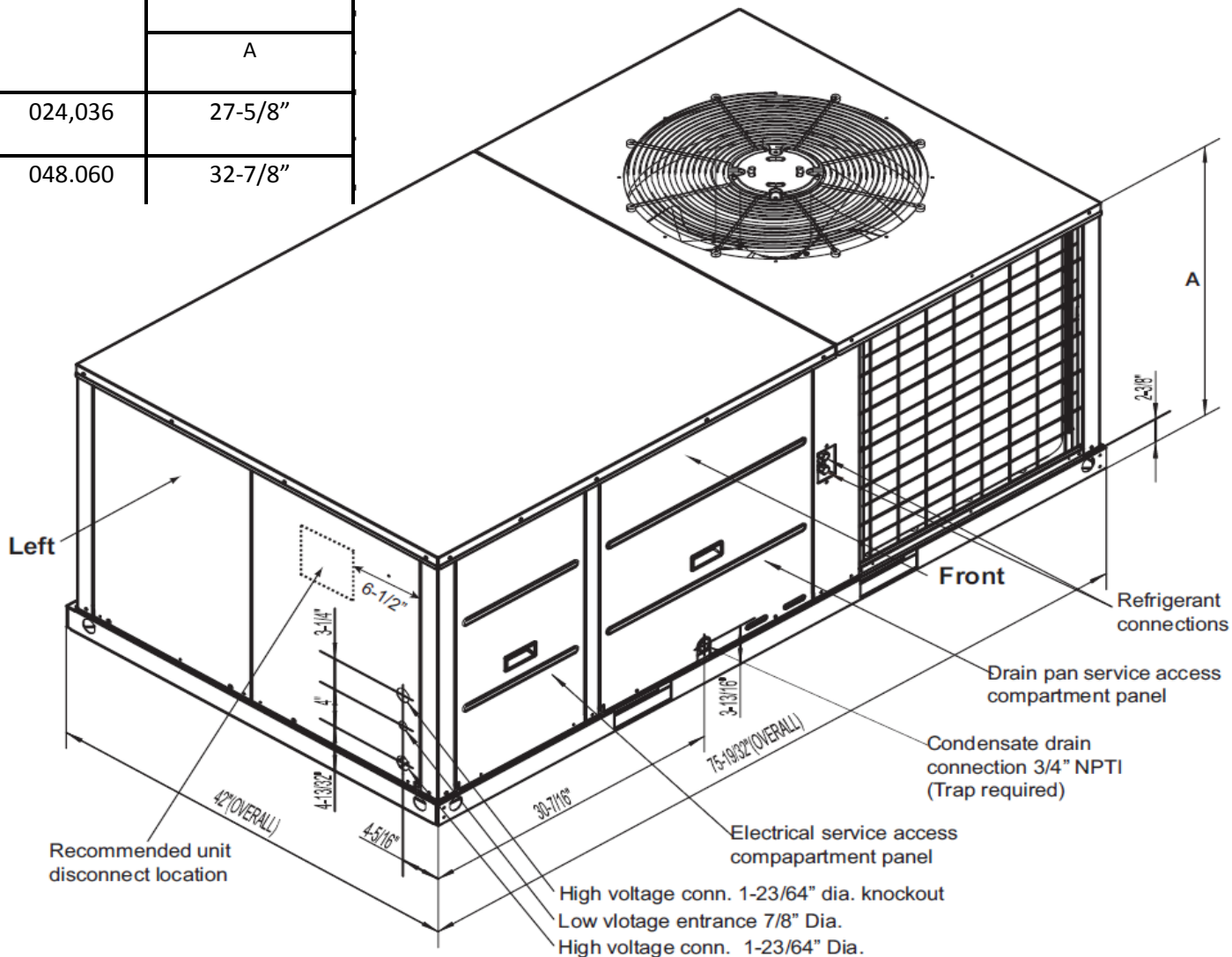
Cooling Capacity (Btu/h) .....	57,000
Sensible Capacity (Btu/h) .....	42,750
Outdoor Design temp. ....	95 / 75F. DB/WB
Temp. of Air Entering Evaporator Coil.....	80 / 67F. DB/WB
System Efficiency (SEER).....	13.0
Power Supply.....	230 VAC / 60 Hz / 1 Phase
Refrigerant.....	R-410A
Blower Motor HP.....	1
Compressor Type: .....	Scroll
R.L.A. ....	22A
M.C.A. ....	33.3A
M.O.C.P. ....	50A
Weight (LBS) .....	507
Dimensions (W x H x D) .....	75-1/4" x 32-7/8" x 41-3/8"
Sound Level ( dB (A)) .....	66

## SUBMITTAL DATA: MEL60-1

## 60,000 Btu/h Package System

UNIT DIMENSIONS (inches):

UNIT SIZE	DIMENSIONS
	A
024.036	27-5/8"
048.060	32-7/8"



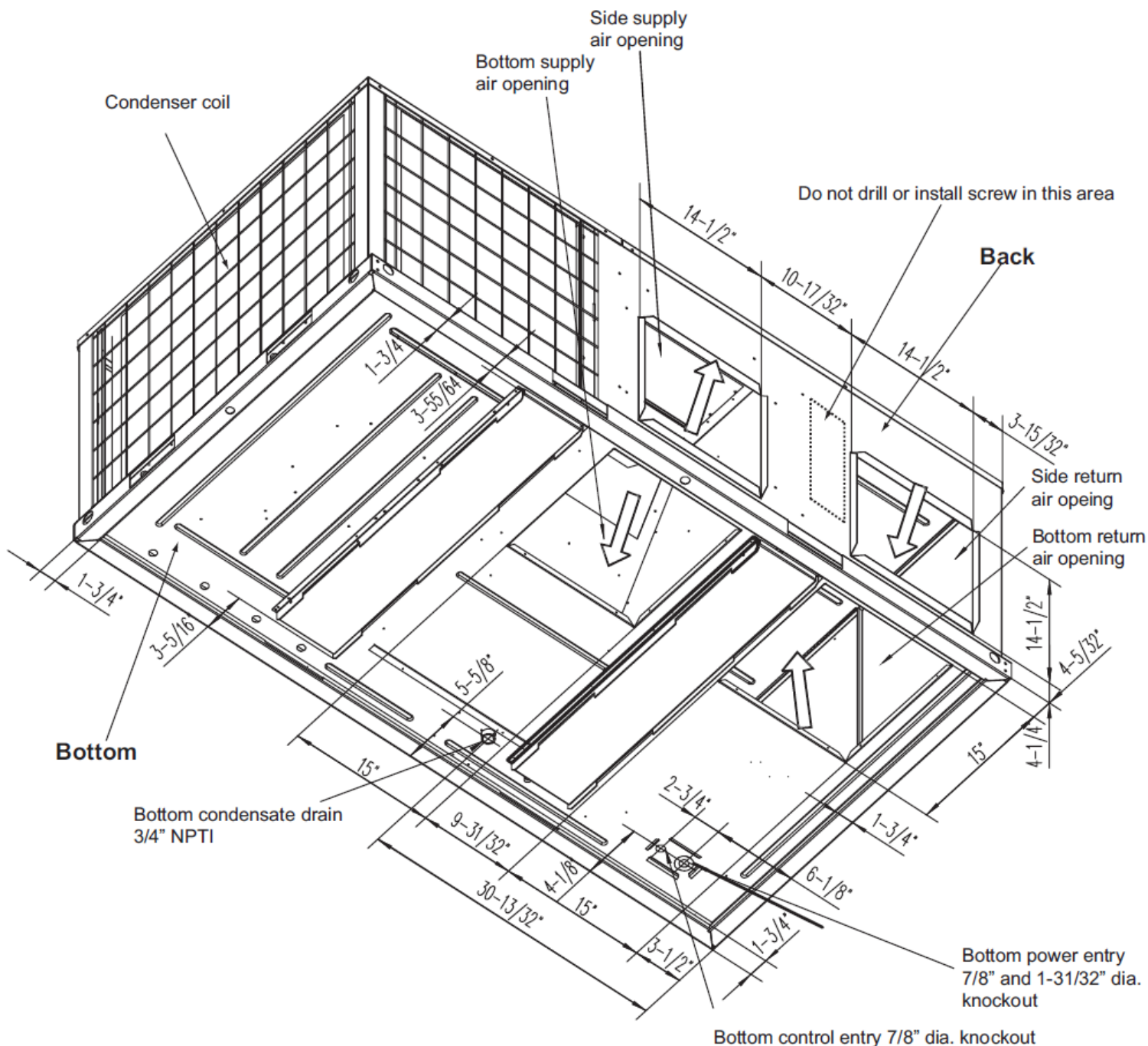
**Table 2-1: Unit Clearance**

Unit size	Distance (in.)	Direction (in.)	Distance (in.)
Top <sup>1</sup>	60	Right	12
Front	30	Left	24
Rear	0	Bottom <sup>2</sup>	0

## SUBMITTAL DATA: MEL60-1

## 60,000 Btu/h Package System

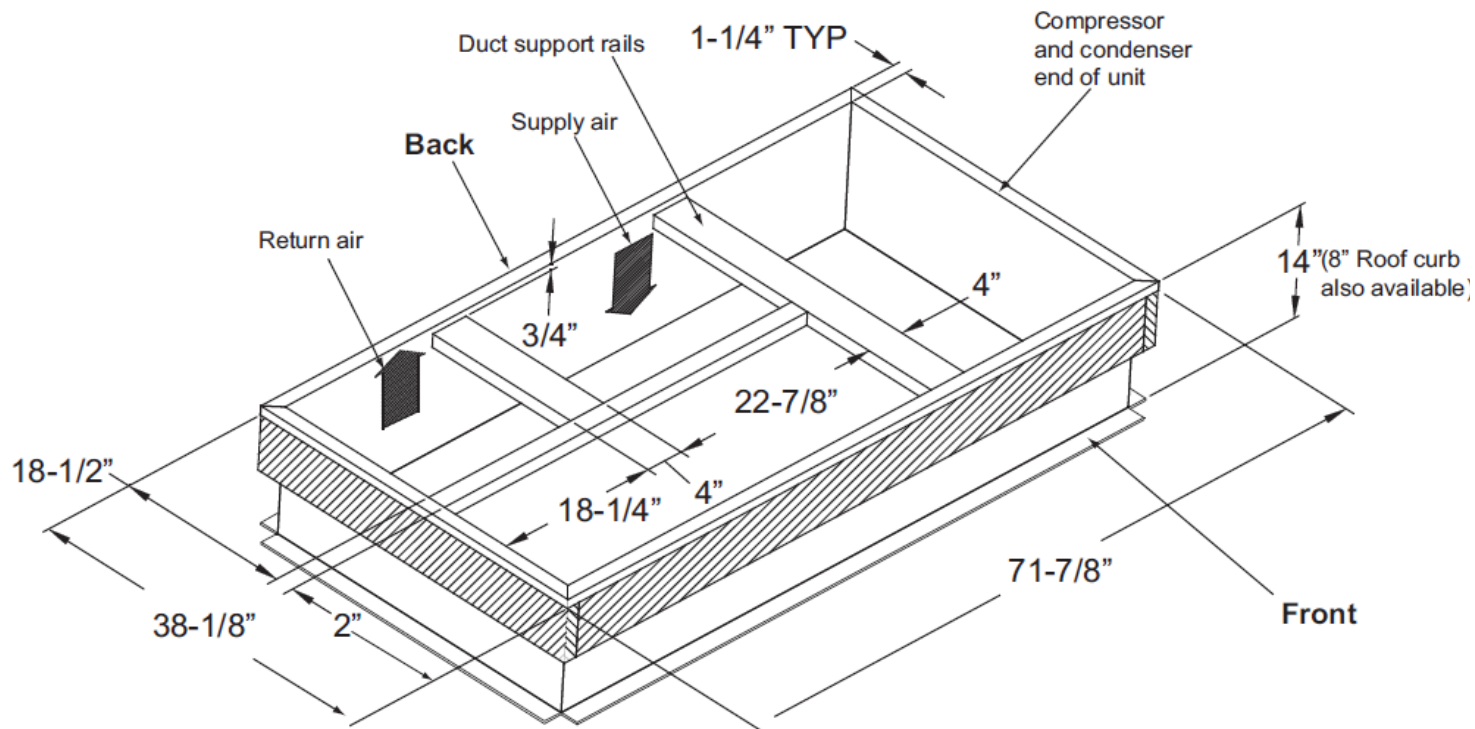
Dimensions Back and Bottoms APPLICATIONS:



## SUBMITTAL DATA: MEL60-1

## 60,000 Btu/h Package System

Roof Curb Dimension:



### Duct sizes

Supply air 15"×15"

Return air 15"×15"

Supply and return air (including duct support rails) shown are typical for bottom duct applications. For location of horizontal duct applications (on back of unit), refer to unit dimension details.

**SUBMITTAL DATA: MEL60-1**

**60,000 Btu/h Package System**

Evaporator Blower Specification Application:

**EXTERNAL STATIC PRESSURE (in. wg)**

UNIT	MOTOR SPEED		0.0	0.1	0.2	0.3	0.4	0.5	0.6	0.7
024	LOW	WATTS	196	194	191	187	182	175	169	160
		CFM	952	885	818	739	654	554	464	343
	MEDIUM	WATTS	296	292	289	284	278	269	259	245
		CFM	1299	1169	1111	1045	972	891	768	658
	HIGH	WATTS	397	390	384	377	368	356	344	329
		CFM	1470	1408	1346	1277	1202	1111	1011	901
036	LOW	WATTS	361	355	348	340	331	319	298	284
		CFM	1341	1286	1242	1193	1134	1063	895	775
	MEDIUM	WATTS	447	438	428	419	408	394	377	347
		CFM	1510	1468	1420	1369	1292	1218	1128	934
	HIGH	WATTS	558	547	536	524	511	493	474	445
		CFM	1705	1685	1604	1549	1489	1416	1321	1179
048	LOW	WATTS	510	500	489	478	463	449	431	404
		CFM	1658	1603	1546	1491	1427	1354	1265	1125
	MEDIUM	WATTS	615	602	587	575	557	541	522	498
		CFM	1837	1776	1724	1647	1576	1502	1413	1295
	HIGH	WATTS	756	741	723	706	689	672	649	627
		CFM	2019	1954	1892	1819	1747	1656	1565	1459
060	LOW	WATTS	731	711	687	666	643	618	595	570
		CFM	2065	2004	1942	1875	1806	1726	1643	1538
	MEDIUM	WATTS	807	779	751	730	703	679	651	624
		CFM	2177	2111	2041	1971	1886	1806	1704	1604
	HIGH	WATTS	878	852	828	801	777	747	719	687
		CFM	2227	2209	2135	2056	1974	1881	1781	1668